

INK PUMP RANGE

**INK IS EXPENSIVE.
MAKE EVERY DROP COUNT.**

Air Operated Piston Pumps

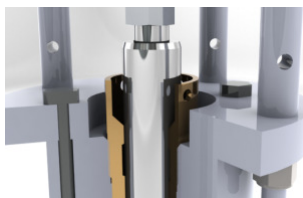
Hydrair Ink pumps lead the competition both in technology and innovation. They have been specifically designed to pump today's high viscosity inks at high flow rates to modern printing presses and are currently used in over 70% of the UK's newspaper market.

Based on a robust modular design with interchangeable pump end assemblies, Hydrair pumps can provide the variety of ink pressure and flow rate combinations needed to suit requirements of both web and sheet-fed print applications.

Being designed as double acting positive displacement pumps means the same performance can be achieved as other ink pump brands with far fewer cycles per minute, reducing air usage and system wear whilst also increasing times between services.

In addition, the divorced pumphead design allows for easy removal of the head for maintenance and prevents contamination of the pumphead by inks. The Wet End of each pump is build from high quality carbon steel as standard with stainless steel available as an option.

Finally, add in Hydrair's own unique designs for seals and valves and the result is a superior ink pump solution that can be incorporated into any ink supply system.



A Divorced Pump Design avoids cross-contamination whilst a unique cup design prevents ink leaks.



Hydrair pumps incorporate specialist seals and valves specifically designed for dealing with the increased abrasion resistance required when working with modern printing inks

Key Benefits

- * High Performance Pumps
 - Delivery per stroke up to 3,275 cc
 - Pressure ratio up to 23:1
 - Pump speed range: from 5 to 10 cycles/min
- * High corrosion and abrasion resistance leads to ;
 - Reduced downtime
 - Minimum maintenance
 - Reduced spare parts cost over the pumps lifetime
- * No ink leaks at the pump cup saving on Ink and cleaning costs
- * Simple, easy and accessible installation process
- * Models available to suit all requirements including UV inks

INK PUMP RANGE

Hydrair's Air operated Ink Pumps consist of the following Models. Based on 6 standard designs with different pump piston sizes, configuration options allow for each to be fine tuned to provide the perfect performance to match any application requirements and give years of trouble-free reliable operation.

DREADNOUGHT



WARRIOR



DOMINATOR



TITAN



COMMANDER



CHIEFTAIN



| 6" PISTON | |
|-----------|----------|
| Ratio | cc/cycle |
| 3:1 | 1160 |
| 3:1 | 1140 |
| 6:1 | 625 |
| 10:1 | 320 |
| 10:1 | 320 |
| 22:1 | 160 |
| 22:1 | 160 |

| 8" PISTON | |
|-----------|----------|
| Ratio | cc/cycle |
| 5:1 | 1160 |
| 5:1 | 1140 |
| 10:1 | 625 |
| 15:1 | 440 |
| 20:1 | 320 |
| 20:1 | 320 |

| 10" PISTON | |
|------------|----------|
| Ratio | cc/cycle |
| 3:1 | 3275 |
| 8:1 | 1140 |
| 8:1 | 1160 |
| 16:1 | 625 |
| 22:1 | 440 |

| 12" PISTON | |
|------------|----------|
| Ratio | cc/cycle |
| 4:1 | 3275 |
| 12:1 | 1210 |
| 23:1 | 625 |

| 14" PISTON | |
|------------|----------|
| Ratio | cc/cycle |
| 6:1 | 3275 |
| 17:1 | 1140 |
| 17:1 | 1160 |

| 16" PISTON | |
|------------|----------|
| Ratio | cc/cycle |
| 23:1 | 1210 |
| 23:1 | 1210 |

MGE reserve the right to change, improve and/or modify all or any products manufactured and sold by us at anytime; this does not incur any obligation on our part to make like changes to any of our products previously sold.